

Models and major assemblies

	Model	Engine	Automatic 7-speed transmission
SLK 350	171.456	272.963	722.906
SLK 55 AMG	171.473	113.989	722.907

Brief description

Vehicle concept

The SLK's dynamic appearance is emphasized by a longer wheelbase than its predecessor, in conjunction with short overhangs at the front and rear and new styling elements.

Besides the innovative retractable roof numerous body components, the majority of which are new developments, contribute to the car's high standards of sporty comfort and safety. With its advanced retractable roof, the SLK is a coupé and a roadster in one.

The mechanism and space-saving storage of the retractable roof in the trunk has been optimized even further. The retractable roof opens and closes at the touch of a button. Within approx. 22 secs. the SLK transforms itself into a classic coupé with all the associated advantages in terms of aerodynamics, aeroacoustics and safety.



SLK roadster

Brief description

Dimensional drawing

In comparison with model series 170, the dimensions of the new SLK have been altered in several respects.

In terms of external dimensions, model series 171 is 2.8" longer, 2.6" wider and 0.8" taller. Its wheelbase has grown by 1.2", its front track width by 1.4" and its rear track width by 2.6".

These modified proportions help to lend the new SLK its dynamic appearance.

The interior compartment has been further optimized. The seat adjustment range has been increased in the horizontal direction from 7.7" to 8.3".

As the vehicle is 0.6" taller, the height of the trunk has been increased by 1" to 38". One of the main benefits is that the front roof frame has been moved upwards relative to the driver.

In spite of its longer wheelbase, the turning circle is reduced by approx. 2.8" to 34.5'.

Innovations at a glance

- Retractable roof with pivoting rear window
- Large trunk capacity
- Improved deformation resistance in collision due to high-strength passenger cell
- Optional bi-xenon headlamps with cornering fog lamps (not available for AMG styling and SLK 55 AMG)
- Roll bars
- Restraint systems with improved detection
- V6-cylinder engine with a displacement of 3.5 l
- AMG 8-cylinder naturally aspirated engine with a displacement of 5.5 l
- AMG high-performance brake system with 6-piston fixed calipers and compound brake disks at the front and 4-piston fixed calipers and internally ventilated brake disks at the rear
- Sports seats with all-round magnesium frame
- Optimized climate control in terms of draft-proofing, low noise emission and effectiveness
- Rear storage compartment (between the seats on the rear wall)
- Audio and communications systems (COMAND) and Motorola cellular telephone

Highlights at a glance

- AIRSCARF neck-level heating (optional equipment)
- Newly developed 7-speed automatic transmission (optional equipment)
- Head/thorax air bags in the outboard sides of the backrests
- New front end
- Optional tire pressure loss warning system
- 2-arm windshield wipers with wiper on the front passenger side



P00.00-3560-00

SLK with closed roof (shown with accessory wheels)



P00.00-3593-00

SLK retractable roof movement sequence (shown with accessory wheels)



P00.00-3559-00

SLK with open roof (shown with accessory wheels)

Equipment

	SLK 350	SLK 55 AMG
Brake system, drive train		
4-piston fixed caliper brake (front)	Standard	—
2-piston fixed caliper brake (rear)	Standard	—
AMG 6-piston fixed caliper brake with compound brake disk (front)	—	Standard
AMG 4-piston fixed caliper brake with internally ventilated brake disk (rear)	—	Standard
Vehicle dynamics control systems ABS, BAS and ESP II	Standard	
6-speed manual transmission	Standard	—
7-speed automatic transmission (including steering wheel gear shift)	Optional equipment	—
AMG SPEEDSHIFT 7-speed automatic transmission (including steering wheel gear shift)	—	Standard

	SLK 350	SLK 55 AMG
Chassis		
Front axle: 3-link axle (MacPherson)	Standard	
Rear axle: MB independent multilink suspension	Standard	
Lowered sports suspension	Optional equipment	—
AMG sports suspension	—	Standard
Steering		
Rack-and-pinion steering	Standard	
Speed-sensitive power steering	Optional equipment	
Manual steering column longitudinal and vertical adjustment	Standard	-
Electric steering column longitudinal and vertical adjustment with easy entry function (memory function)	Optional equipment	Standard

Equipment

	SLK 350	SLK 55
Wheels, tires and light alloy wheels		
Front axle: Standard suspension	225/45 R 17 on 7.5J x 17 ET 36	225/40 R 18 on 7.5J x 18 ET 37
Rear axle: Standard suspension	245/40 R 17 on 8.5J x 17 ET 30	245/35 R 18 on 8.5J x 18 ET 30
AMG 18" light alloy wheel with 5-spoke design (painted in sterling silver)	—	Optional equipment (at no extra cost)
AMG 18" light alloy wheel with multi-spoke design (16 spokes, polished)	—	Standard
Available M&S winter tires ¹⁾ approved for snow chains	225/45 R 17 on 7.5J x 17 ET 36	205/50R 17 ¹⁾ on 7J x 17 ET 37 or 225/45 R 17 ¹⁾ on 7.5J x 17 ET 37 or 225/40 R 18 ¹⁾ on 7.5J x 18 ET 37

	SLK 350	SLK 55 AMG
Safety and anti-theft protection		
Head/thorax air bags in the front seat backrests	Standard	
Fixed upright roll bars	Standard	
MOExtended (Mercedes-Benz Original Extended) tires with emergency run flat characteristics (not for AMG 18" light alloy wheel [optional equipment]) with tire pressure loss warning system	Optional equipment (Delayed availability)	—
Emergency tensioning devices and 2-stage belt force limiters	Standard	
Dual stage driver and passenger air bags with 2 deployment thresholds	Standard	
Locking system with remote control	Standard	

Equipment

	SLK 350	SLK 55 AMG
Safety and anti-theft protection		
Convenience locking system with infrared remote control for the retractable hardtop	Optional equipment	Standard
Anti-theft alarm system (ATA)	Standard	
Climate control/Automatic Climate Control		
Climate control	Standard	
Automatic climate control	Optional equipment	
AIRSCARF neck level heating (optional with heated seats)	Optional equipment	
Heated seats	Optional equipment	Standard

Equipment

	SLK 350	SLK 55 AMG
Aerodynamics		
AMG rear mounted spoiler	—	Standard
Additional longitudinal fins on hood, silver-painted	—	Standard
Lateral fin in radiator grille, black-painted	—	Standard
Light systems		
Bi-xenon headlamps with cornering fog lamps (not available for AMG styling and SLK 55 AMG)	Optional equipment	
Halogen headlamps	Standard	
Interior ambient light package	Optional equipment	Standard
LED taillamps	Standard	
Tinted rear lamps and tinted center high-mounted stop lamp	—	Standard

Equipment

	SLK 350	SLK 55 AMG
Convenience systems		
Cruise control	Standard	
Retractable hardtop, electrohydraulic with heated rear window	Standard	
Automatically dimming inside rearview mirror and outside mirror (left)	Optional equipment	Standard
Garage door opener in overhead control panel	Optional equipment	
Draft stop, textile version	Standard	
Rear storage compartment (on the rear wall between the seats)	Standard	
Coat hanger hook on the rear of the front seats	Standard	

	SLK 350	SLK 55 AMG
Convenience systems		
Armrest with compartment (SLK 55 AMG: armrest top covered in nappa leather)	Standard	
3-spoke multifunction steering wheel in leather	Standard	—
AMG ergonomic sport steering wheel with shift buttons	—	Standard
AMG instrument cluster (200 mph scale, AMG logo and V8 logo in tachometer)	—	Standard
8-way power front seats with 3-position memory function and power adjustable steering column with memory and outside mirrors	Optional equipment	Standard
Longitudinal and vertical seat adjustment and backrest angle all mechanical	Standard	
Belt guide on the seat	Standard	

Equipment

	SLK 350	SLK 55 AMG
Telephone, audio and communications systems		
Audio 20 CD radio	Standard equipment	
CD changer in glove compartment	Optional equipment	
harman/kardon Logic 7 digital surround sound system with 11 speakers	Optional equipment	
Integrated Motorola Digital telephone	Optional equipment	
COMAND with DVD navigation	Optional equipment	
Tele Aid	Standard equipment	
Antenna for radio on rear fender	Standard	

AMG styling

The AMG styling package is available for the SLK 350 as optional equipment. Its characteristic features include the front apron with front fog lamps framed by chrome rings, side sill panel trim covers and the rear apron with its black insert (diffusor look).

SLK 55 AMG

The high-performance roadster has a unique frontal aspect:

- Specific front apron with side air outlets
- Air inlet grilles on both sides and in the center
- Silver-painted longitudinal fins on the hood
- Black-painted lateral fins in the radiator grille

The tail of the AMG roadster also differs from that of the production version:

- Trunk lid with AMG spoiler

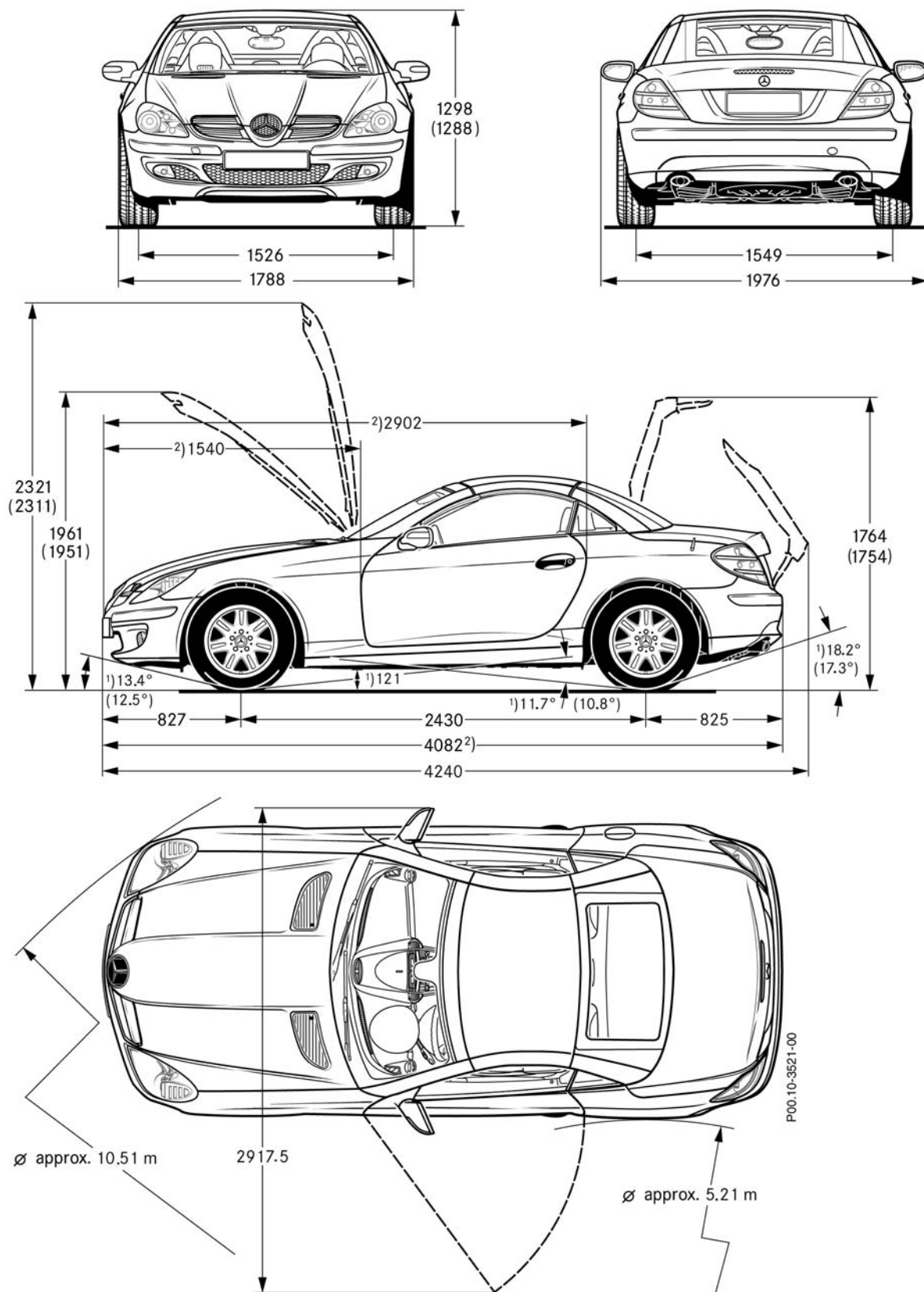
- AMG rear apron with diffusor look
- Tinted rear lamps and tinted center high-mounted stop lamp
- AMG sports exhaust system with twin chrome-plated tailpipes

The AMG roadster is fitted with AMG 18" multi-spoke light alloy wheels as standard equipment. Alternatively (as optional equipment at no extra cost), AMG 18" light alloy wheels in the new 5-spoke design are available. The AMG-specific side sill panel trim covers emphasize the vehicle's strikingly sporty style.



Front view of SLK 55 AMG

Dimensions



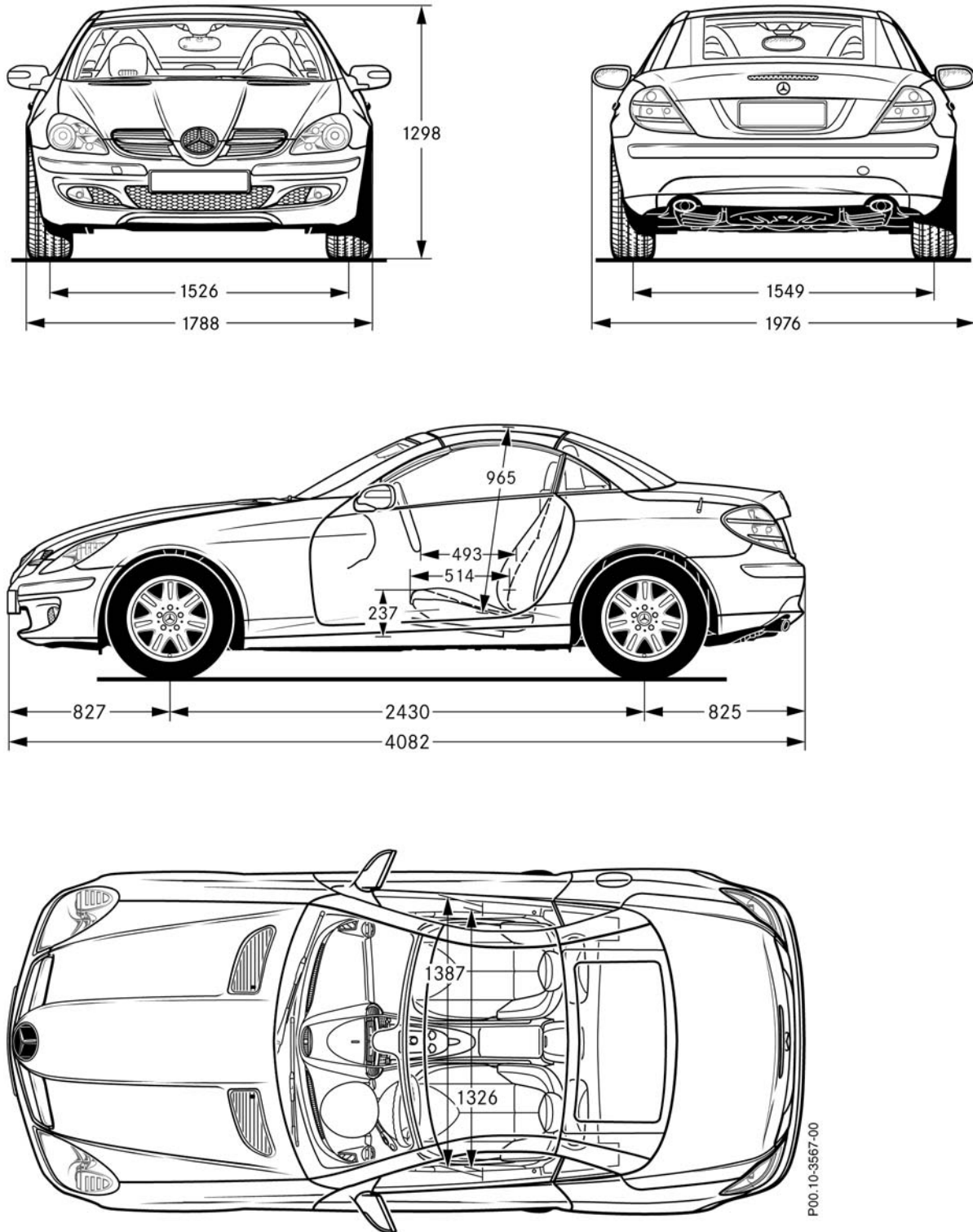
Vehicle dimensions (shown with non-US wheels)

¹ Loaded with 2 persons of 75 kg each

² Dimension without license plate adapter (7 mm)

(...) Vehicles with sports suspension
Dimensions unloaded

Dimensions



Vehicle dimensions (shown with non-US wheels)

Dimension without license plate adapter (7 mm)

Dimensions unloaded

		SLK 350	SLK 55 AMG
Dimensions and weights			
Curb weight as per DIN	kg	1465	1540
Permissible gross vehicle weight	kg	1780	1850
Payload	kg	315	310
Max. seating capacity		2	
Trunk capacity (with closed roof)	l	277	
Trunk capacity (with open roof)	l	185	
Turning circle	m	10.51	
Tank capacity	l	70	

Exterior colors

Exterior colors

The exterior colors available for the SLK are three standard¹ and eight optional metallic² finishes as well as one exclusive SLK color³.

Color no. MB	Designation
590	Mars red ¹
040	Black ¹
960	Alabaster white ¹
548	Firemist red ²
345	Orion blue ²
359	Capri blue ²
816	Everest green ²
762	Diamond silver ²
775	Iridium silver ²
197	Obsidian black ²
950	Caspian blue ^{2,3}
723	Pewter ² (launch edition only, cannot be ordered except with launch edition)

Active safety

In comparison with the predecessor model series, numerous components have been redeveloped for even better active safety:

- Handling and stability
- Visibility
- Ergonomic features
- Stress-reducing features

The improvement in handling and stability are largely due to:

- 3-link front axle
- Optimized independent multilink rear suspension
- Rack-and-pinion steering gear
- Tire pressure loss warning system (optional)

The newly developed components which help to improve visibility include:

- Projection headlamps with automatic driving light actuation at night and in tunnels
- Bi-Xenon headlamps (optional equipment) with cornering fog lamps (cornering fog lamps function not available for AMG styling and SLK 55 AMG)
- Narrower A-pillar for an improved view
- 2-arm windshield wipers with excentric sweep arm on the front passenger side too

Ergonomics are improved by:

- Ergonomic controls for the communications and information systems
- Multifunction steering wheel including thumb rest
- Clearly readable antiglare instruments

The improved stress-reducing features:

- New, more comfortable seats
- Automatic Climate Control (ACC) (optional)



Multifunction steering wheel with instrument cluster

Passive safety

Passive safety

The high safety standard of the predecessor model has been further improved in the new SLK with addition of the newly developed restraint systems and the car's higher static and dynamic structural strength and durability:

- Occupants are supported by a roadster-specific frame floor system with B-pillar stumps, a high-strength A-pillar assembly and a deformable hybrid steering wheel
- Optimized lightweight steel construction combined with high-strength structural components in the front end and side walls for outstanding crash performance
- Generous crumple zones at the rear, fuel tank and filler neck located above the rear axle, box-shaped rear longitudinal members and steel spare wheel well

The safety-relevant restraint systems for the driver and the front passenger have also been developed further. Notable additions on the new SLK are:

- Two-stage, adaptive inflation of the optimized air bag
- 3-point seat belts with buckle emergency tensioning devices and a two-stage, adaptive belt force limiting function
- Head/thorax air bags in the outsides of the backrests

One important factor needed for optimized air bag was the further expansion of the sensor systems with appropriate software adjustments for the restraint systems control module to improve detection of the accident type and severity.

These include:

- Two upfront sensors in the frontal area for quicker sensing of the accident severity
- A rollover sensor

Aerodynamic drag

The amount of lift at the front and rear axles has an influence on directional stability and road adhesion, and thus affects active safety. Front and rear axle lift in model series 171 has been substantially reduced in comparison with the predecessor model.

Its remarkably low drag coefficient of 0.34 for SLK 350 was achieved by the following measures:

- Steeply raked front end
- More steeply raked windshield
- An all-round air flow breakaway edge at the rear
- Wheel spoilers in front of the front and rear wheels
- A fully enclosed engine compartment and underbody
- Optimized rocker panel covers
- Redesigned outside mirrors

Aeroacoustics

Precision optimization of the retractable roof has produced a further reduction in wind noise. The new outside mirrors play a significant role in this: Their external dimensions have been reduced and the drain lip on the underside of the housing (which was previously required to help keep the mirror clean) is no longer necessary. In terms of aeroacoustics, the retractable roof has further extended the SLK's existing head start over roadsters with soft tops.



Airflow with retractable roof open

Lighting

Halogen projection system

The halogen projection system consists of the following equipment:

- On the outside the lens optics with an H7 bulb for the low beam
- Beside this a reflector with a yellow bulb for the turn signal
- Underneath, a reflector with an H7 bulb for the high beam and a 5W bulb for the standing lamp

Bi-Xenon projection system

The halogen projection system can be replaced by a bi-Xenon projection system (optional equipment) which performs the high beam function as well as the low beam. To differentiate it visually from the halogen version, a transparent area above the low beam lamp is illuminated and creates interesting light effects when viewed from the side. The equipment package of the bi-Xenon headlamps includes a headlamp cleaning system, an electronic headlamp range adjustment system and cornering fog lamps.

Cornering fog lamps

By widening the light scatter of the front fog lamp, the cornering lamps provide significantly improved illumination of the road into which the vehicle is turning. The left or right front fog lamp is activated under the following conditions:

- Driving lamps switched on
- Vehicle speed below 25 mph
- An appropriate steering angle or turn signal activated

The "cornering fog lamps" function is not available in conjunction with the AMG sport package or SLK55.



P82.10-3505-00

Headlamps

Interior

Interior design

The interior has been totally redesigned compared to the predecessor model series:

- A newly developed display and control concept with central display and multifunction steering wheel
- A sporty instrument cluster in the form of cylindrical tubes inclined towards the driver
- A prominent full-length center console

- Newly developed sports seats with integral head restraints and magnesium frames
- A new design concept with silver controls and trim strips on a black background

The "designo" equipment line is also available for the interior appointments.

SLK 55 AMG

- Nappa leather equipment
- AMG ergonomic sport steering wheel with steering wheel shift buttons
- AMG door sill moldings
- AMG sports seats with cross-piping design and AMG badge on the backrest
- Nappa leather armrest between the seats
- AMG selector lever
- Door linings (center door panel, armrest and door closing handle in Nappa leather)



Interior compartment (SLK350)

Interior

Instrument cluster

The instrument cluster of the SLK contains the speedometer (left) and the tachometer (right) in the form of dial-type gauges each enclosed by a cylindrical tube. The elliptical ends of the tubes facing the driver are tilted towards each other and are finished in a silver finish like the external surfaces. On the side of the left-hand tube are three adjusting buttons. Two of the buttons (+, -) are used to regulate the dimming of the instrument illumination. The third button (R) is the reset button.

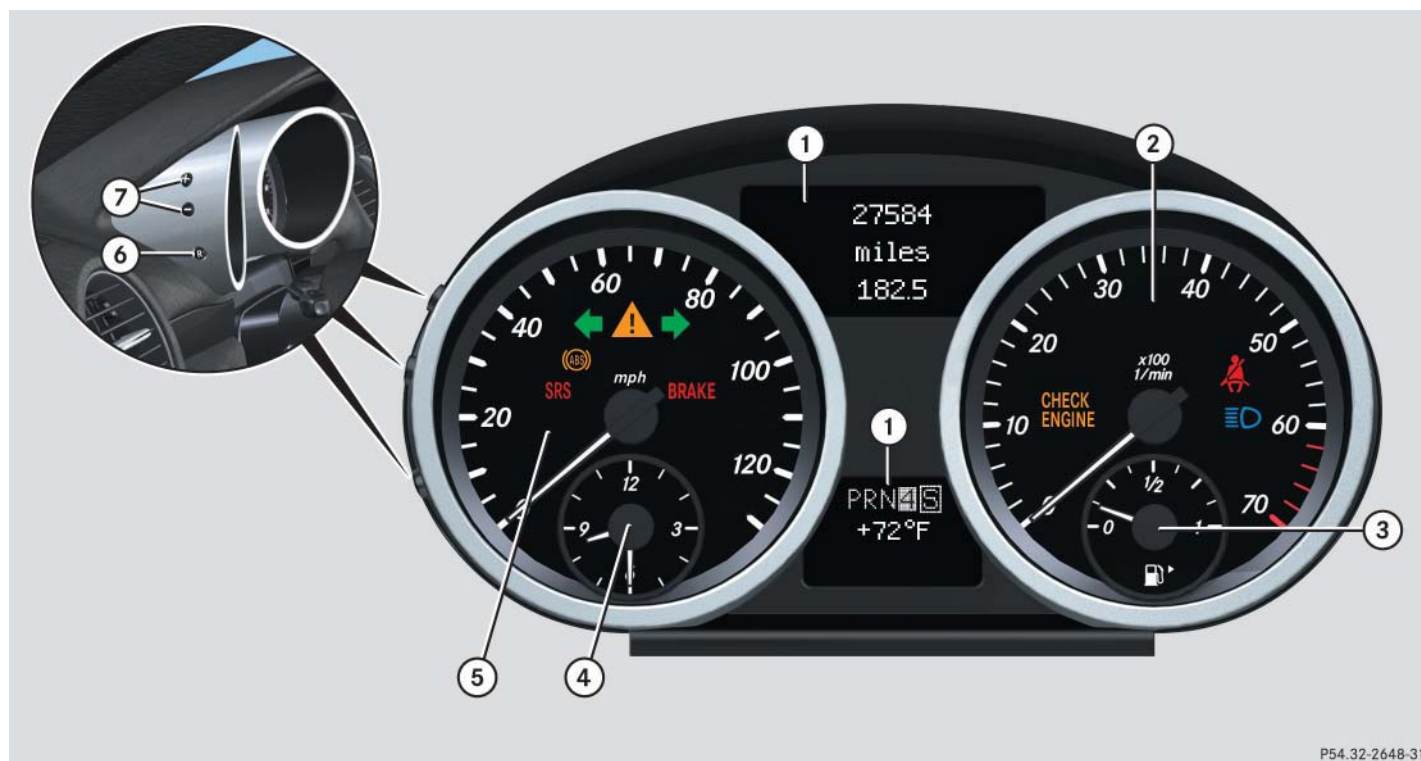
The speedometer contains various warning lamps as well as an analog clock, and the tachometer incorporates an analog fuel gauge. The faces of the two dials are back-ground-lit in daylight. The illumination brightness is automatically adjusted to suit the light conditions inside the car by means of a phototransistor, but can also be regulated manually with the aid of the adjusting buttons.

Between the dial gauges are two LCDs, one on top of the other, containing information for the driver (including mileage, outside temperature and transmission mode).

SLK 55 AMG

The AMG instrument cluster differs in:

- 320 km/h scale
- Red needles
- Anthracite-colored tubes
- Dial faces edged in silver
- AMG and V8 logos in the tachometer



P54.32-2648-31

Instrument cluster

- | | |
|--------------------------|---------------------------------|
| 1) Multifunction display | 5) Speedometer |
| 2) Tachometer | 6) Reset button |
| 3) Fuel gauge | 7) Knobs for instrument cluster |
| 4) Clock | |

Center console

One major distinguishing feature compared with the predecessor model series is that the top section of the center console is integrated into the dashboard. At its top end it frames a semi oval black grille for indirect ventilation of the interior compartment (vehicles with automatic climate control only). The cockpit ventilation nozzle at the top supplies fresh air to the head area. The grille conceals two adjustable center air outlets with silver-colored slats which are flanked on both sides by prominent ventilation pipes.

Below the center air outlets, the following are arranged on the center console from top to bottom:

- Cup holder
 - Radio/COMAND
 - Switch panel
 - Climate control/automatic climate control module
 - Ashtray with cigarette lighter
 - Storage compartment
 - Transmission selector lever
 - Adjustment switches (including outside mirrors and retractable roof)
- Hand brake lever
 - Armrest with storage compartment (if the car is equipped with a telephone, there is an additional slot for housing the portable CTEL.)
 - Another storage compartment on the rear wall of the interior compartment (the cover is hinged at the bottom and opens forwards.)
 - Two tweeters (optional equipment)



Dashboard

Interior

Door panels

The forward part of the door panel is characterized by a visual continuation of the top of the dashboard. In this area are the door opener at the top and two speakers underneath (mid-range and woofer). The third speaker (tweeter) is mounted on the inside of the mirror triangle.

A generously sized armrest is installed in the middle of the door panel. Immediately forward of the armrest is the massive magnesium closing/grab handle. On the front end of this are the control buttons for the power windows.

SLK 55 AMG

On the door lining of the SLK 55 AMG the following elements are covered with Nappa leather:

- Center door panel
- Armrest
- Door closing handle

Glove compartment

Although a front passenger air bag is fitted, the SLK still has room for a large glove compartment with a capacity of 6.3 liters. The glove compartment is locked and unlocked via the central locking.

The illuminated glove compartment houses a pen and coin holder in the lid as well as a CD changer (optional equipment).



Glove compartment

Deluxe seats

The newly developed sports seats of the SLK differ from those of the predecessor model series in both their external shape and their technical design.

The upper seat belt guide point is anchored in the area of the rear/side wall joint. A loop guides the belts and ensures that they are easily reachable in the retracted position.

Other visual features are the silver-painted, all-round magnesium frame between the backrest cushion and the seat back and rubber bellows concealing the head restraint opening. The long-distance comfort and lateral support of the sports seats have been significantly improved.

The standard equipment of the seats includes:

- Manual seat adjustment (longitudinal position with automatic adjustment of the seat cushion inclination, backrest adjustment (continuous), seat height and head restraint height)
- Fold forward driver seat backrest
- Coat hanger hook on the rear of the backrest
- Head/thorax air bag (in the outboard side of the backrest)
- Static lumbar support
- Leather

Optional equipment available for the seats includes:

- Heated seats (standard for SLK55 AMG)
- Electric seat adjustment with memory function (standard for SLK55 AMG)
- Heated seats with AIRSCARF neck level heating (package)

A new feature of the SLK is the fully electronic seat adjustment with memory function (optional equipment). The operating switches are located on the outside of the seat cushion. The memory buttons can be used to save the current seat position and there are three memory slots available for each of the two electronic keys.



Deluxe seat

Interior

A head/thorax air bag with gas generator is attached to the out board edge of each of the silver-colored magnesium backrest frames.

SLK 55 AMG

The AMG sports seats have the AMG-specific cross-piping design and are covered with Nappa leather. They have more prominently contoured side wings and an AMG badge in the backrest (heated seats as standard).

With the equipment variants "black", "black/accent red" and "black/ash leather" the head restraints and the side wings are black.

These three variants also feature anthracite-colored Alcantara inserts at shoulder level providing additional lateral support.



Head/thorax air bag

Inside rearview mirror

As part of the interior equipment package, two reading lamps (optional equipment) and one ambient lamp (optional package on SLK350, standard on SLK55 AMG) are integrated into the mirror housing. The mirror base also accommodates the GPS antenna and the light/rain sensor.

Interior lighting

The lighting functions have been redesigned, as has the electronic control of the lights in the interior compartment. With regard to the night design, the orientation lighting functions in particular have been expanded. An ambient lamp (interior ambiance light package) in the inside rearview mirror helps the driver and front passenger find the controls when driving at night. The intensity of the ambient light is detected by a light sensor located in the mirror base and evaluated by the control module in the overhead control panel.

Overhead control panel

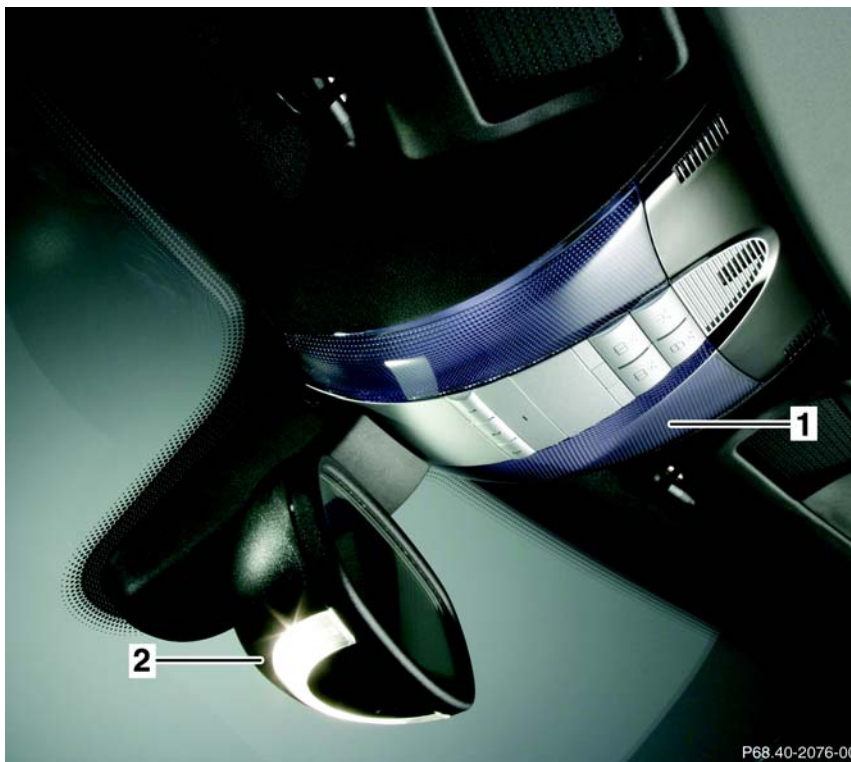
The overhead control panel houses the electronic control and power supply systems for several major components.

These include:

- Interior lights and vanity mirror illumination
- Illumination of the switch symbols
- Light/rain sensor

The following are located in the housing of the overhead control panel:

- Switches for the interior lights
- Tele Aid emergency call system button
- Three buttons for the garage door opener (optional equipment)
- Up to three microphones for emergency call, hands-free system



Inside rearview mirror / overhead control panel

- 1 Overhead control panel
- 2 Inside rearview mirror with interior illumination

Interior

Trunk

As in the predecessor model, the trunk capacity is dependent on the stowage options for the retractable roof.

The new pivot action of the individual roof components has made it possible to fold the "rear window" and "front roof" components on top of each other. This increases the capacity of the lower part of the trunk, which can be used for luggage. The storage capacity is 6.5 cu. ft.

The collapsible spare tire is accessed by swinging up a flap in the trunk floor.

Instead of a roller blind, the trunk is fitted with a fixed luggage cover which pivots in the longitudinal direction. This ensures that the luggage cannot collide with the roof components as they fold into the trunk.

The retractable roof can only be opened when the luggage cover is swung back and locked in place. With the roof closed, the luggage cover can be swung forward in a single action to facilitate the unloading of the trunk. In this way, the entire trunk capacity of 9.8 cu. ft. can be utilized.



P68.00-3564-00

Trunk with luggage cover

- 1 Luggage cover pivot device

Engine 113 - Engine data

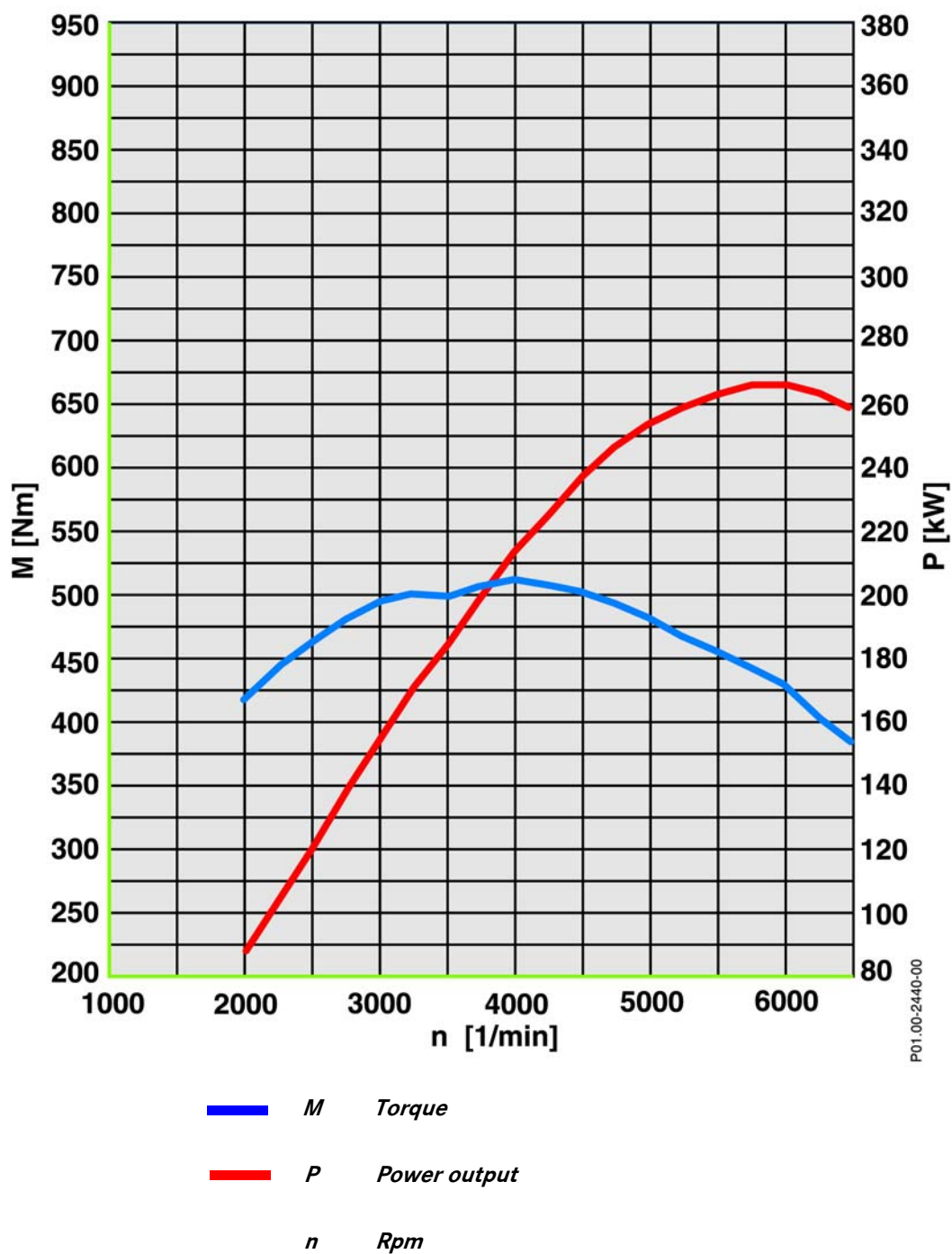
		SLK 55 AMG
Engine model designation		113.989
Engine designation		M 113
Engine configuration/no. of cylinders		V8
Displacement	cm ³	5 439
Bore	mm	97.0
Stroke	mm	92.0
Cylinder angle		90°
Acceleration 0 to 100 km/h	secs.	4.9 ^{1,3}
Maximum speed	km/h	250 ^{1,2}

¹ With automatic transmission

² Electronically governed

³ Stated rates of acceleration are based upon manufacturer's track results and may vary depending upon model, environmental and road surface conditions, driving style, elevation and vehicle load.

M 113		
Rated output	kW at rpm	265 5 750
Rated torque	Nm at rpm	510 4 000
Compression ratio	ε	11.0



Engine 113 - Technical highlights

SLK 55 AMG

The SLK 55 AMG offered by Mercedes-AMG is the only vehicle in this class available with an 8-cylinder engine. The AMG 5.5 l naturally aspirated engine in the new SLK develops 265 kW and 510 Nm together with the AMG sports exhaust (which is perfectly tuned for the 8-cylinder engine).

The engine's technical characteristics are:

- Two-stage variable-length intake manifold
- Near-engine mounted catalytic converter for lower emissions
- Specially tuned engine oil cooler in the right wheelhouse
- Redesigned engine cover
- Engine control module installed in the vehicle (in an AMG-specific module box)
- Lower fuel consumption due to optimized combustion, reduced friction and consistent lightweight construction



Engine 113